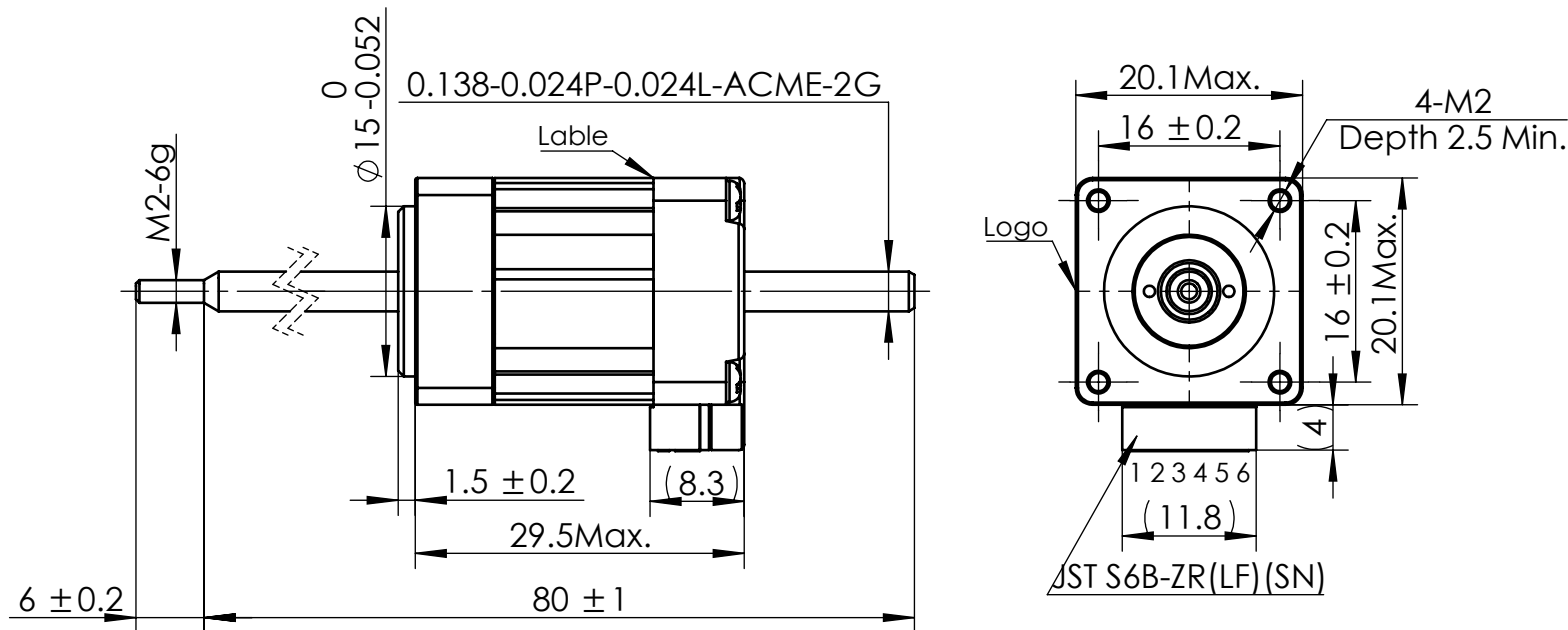
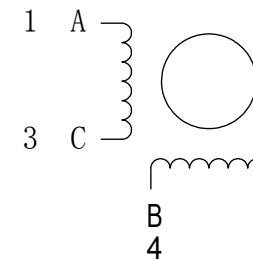


物料号
Material NO. 4611110031560



接线图 Wiring Diagram



励磁顺序 vs. 旋转方向
Exciting Sequence vs.
Direction of Rotation

STEP	A	B	C	D	
1	+	+	-	-	↑ CCW ↓ CW
2	-	+	+	-	
3	-	-	+	+	
4	+	-	-	+	

从安装面看为顺时针方向
Clockwise view from
mounting side

电机标签
Motor label

LEAD SCREW MOTOR
LN081S-E03006-80-S-050
XXXXXXXX

批次号

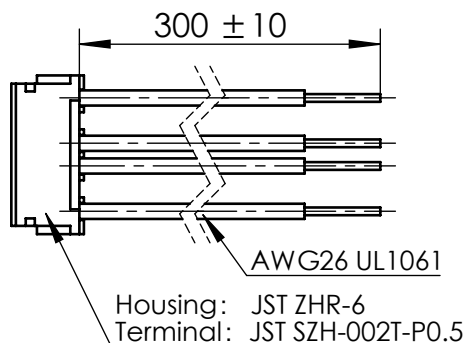
备注Note:
螺纹丝杆及螺母在正常使用过程中,
若有少许粉尘掉落为正常现象。
It's normal phenomenon if there
is a little dust fall off when using
the lead screw and nut.

丝杆电机参数表
Lead Screw Motor Specification

1	相数 Number Of Phase	2
2	步长 Linear Travel/Step	0.003048 mm (1.8°)
3	额定电压 Rated Voltage	4.3 V
4	额定电流 Rated Current	0.5 A
5	额定推力 Rated Thrust	31 N at 600rpm
6	相电阻 Phase Resistance	8.6 ohm ± 10% (20°C)
7	相电感 Phase Inductance	6.5 mH ± 20% (1kHz 1V rms)
8	转子惯量 Rotor Inertia	1.6 gcm ²
9	重量 Weight	0.04 Kg
10	绝缘等级 Insulation Class	B
11	丝杠直径 Screw Diameter	3.505 mm
12	丝杠导程 Lead	0.6096 mm

版本变更

版本	变更说明	签名	日期
----	------	----	----



连接器针位 vs. 引线颜色
Pin No. vs. Lead Wire Colour

Pin No.	颜色 Colour
1	黑 BLK
3	绿 GRN
4	红 RED
6	蓝 BLU

未标注线性尺寸和公差
Tolerance for linear and dimensions
without individual tolerance indications
GB/T 1804-M eqv ISO 2768-1:M

未标注形状与位置尺寸公差
Geometrical tolerance for features
without individual tolerance indications
GB/T 1184-K eqv ISO 2768-2:K

I. 请避免螺母脱离丝杠
Keep nut on screw.
II. 非专业人士请勿拆解电机
Avoid disassembly without
qualification.

设计 Design	杨淑娟	2019/11/11
校核 Check		
工艺 Process		
标准化 Standard		
批准 Approve		

First Angle Method	材料 Material	总图
Page 1 of 1	版本 Version	A0

</